

KIM Box Pack Specifications



SATIN NICKEL



SATIN CHROME



These finishes are available with Microban anti-microbial coating: 15

AVAILABLE FUNCTIONS:



Passage




Privacy



Entry



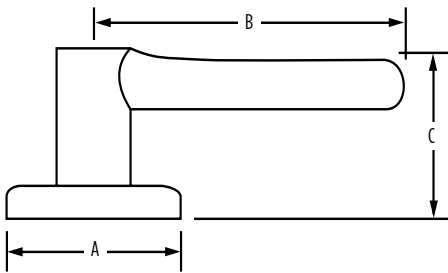
Inactive

K		 20 min.	Satin Nickel	Satin Chrome
Passage	GLC101 K	<input type="checkbox"/>	<input type="checkbox"/>	<input type="checkbox"/>
Privacy	GLC331 K	<input type="checkbox"/>	<input type="checkbox"/>	<input type="checkbox"/>
Entry	GLC535 K	<input type="checkbox"/>	<input type="checkbox"/>	<input type="checkbox"/>
Inactive	GLC12 K	<input type="checkbox"/>	<input type="checkbox"/>	<input type="checkbox"/>



SPECIFICATIONS

Door Prep	Cross Bore 2-1/8" Edge Bore 1" Latch Face 1" x 2-1/4"
Backset	Adjustable to 2-3/8" or 2-3/4"
Door Thickness	SMT 1-3/8" - 1 3/4" KW P&T 1-3/4"
Cylinder	SmartKey or KW 5-pin
Faceplates	1" x 2 1/4" Specify round corner or square corner or drive-in"
Strikes	1-1/8" or 2-3/4" Specify round corner or square corner"
Bolt	1" throw
Door Handing	Reversible for right or left-handed doors
ANSI/BHMA	A156.5 Grade 3
ADA	Interior turn piece meets 4.13.9 ADA requirements
UL	*Meets 3 hour fire rating for all UL functions when fronted latches used. Meets 20 minute with Square, Radius or Drive-In used
ASTM	All Weiser product meets ASTM E 331 water penetration testing



Dimensions	A	B	C	C (Keyed)
Kim	2 5/8"	3 5/8"	1 15/16"	2 5/8"

WARRANTY:

Weiser™ products provide a "Lifetime Mechanical Warranty" that covers all defects in material and workmanship. For more information, please visit ca.weiserlock.com/en/warranty/.